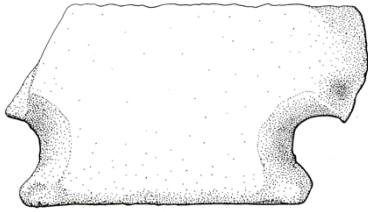


Exploring the Roman Gallery

Can you find these objects in the Roman Gallery?
Think of one or two words to describe each object when you find it.



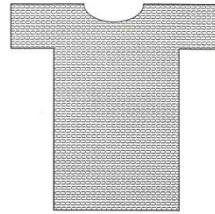
Latrine (toilet) seat
.....



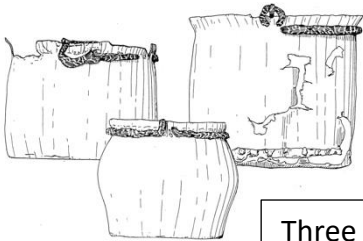
Portable Mercury shrine
.....



Fortuna statuette
.....



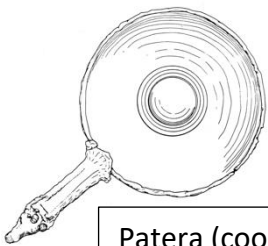
Ring mail shirt
.....



Three mess tins
.....



Head of Minerva
.....



Patera (cooking pan)
.....



Bath house inscription
.....